

Number of Enterprise Advisers Signed Up

103/100

Number of schools Signed Up

123/100

% of 153 schools in Coast to Capital Area

Schools Matched

96/100

% of 153 schools in Coast to Capital Area

Compass Reports completed January & February 2019

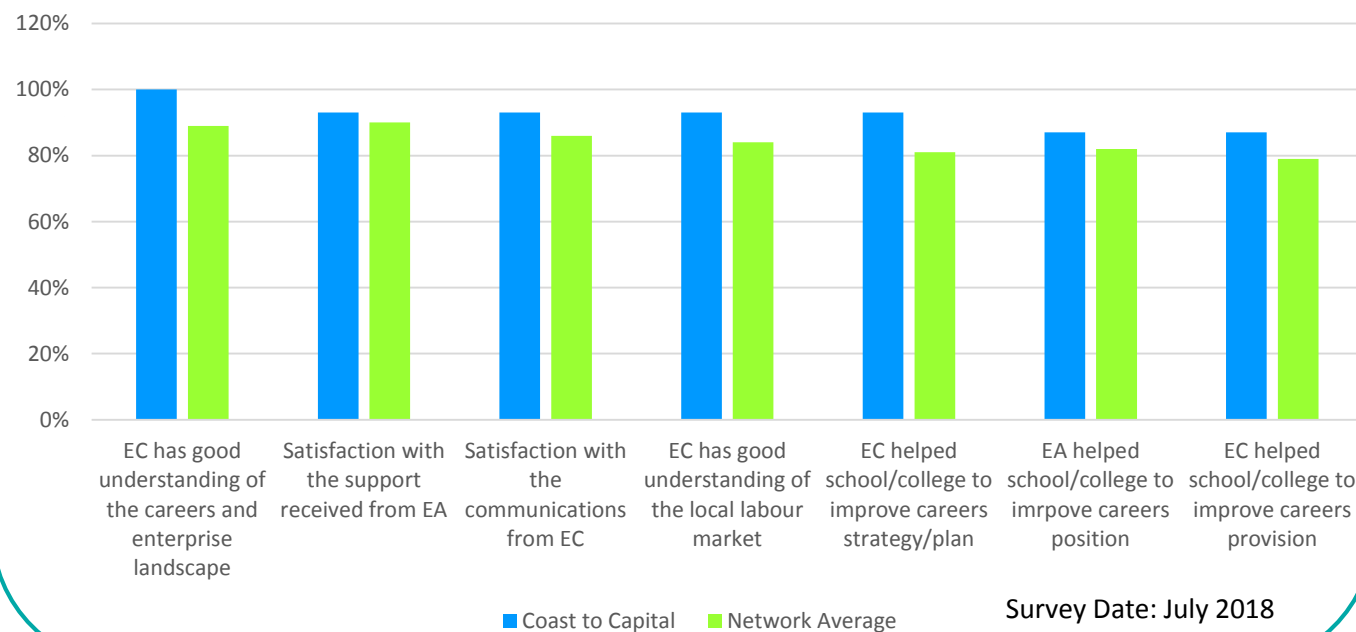
33

Number of Industry Champions

184

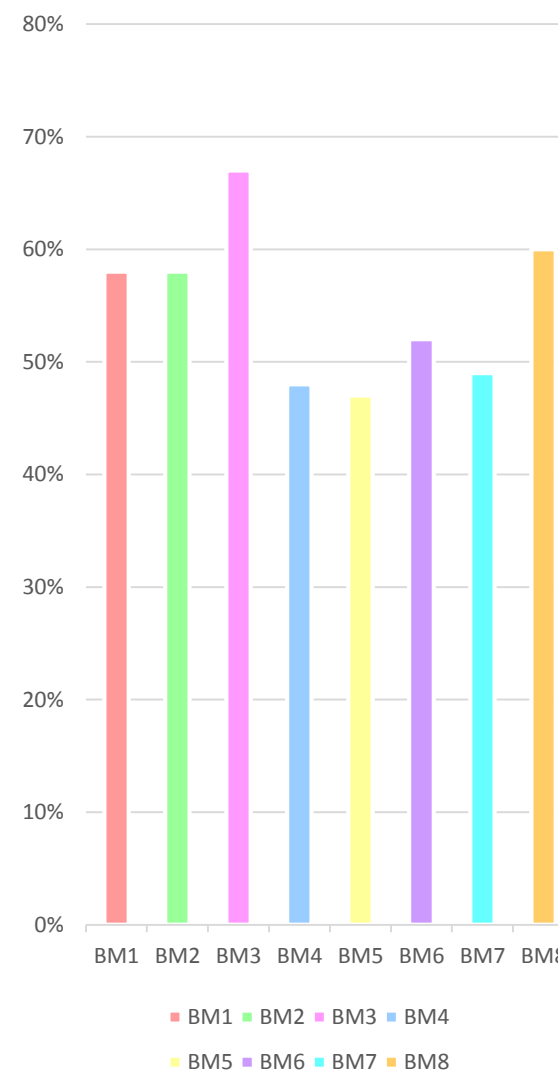
1 Evaluation Comparison of Network Average and Coast to Capital

Overview of EAN Evaluation Survey responses from schools in Coast to Capital LEP - Comparison of Network Average to C2C



2.2 Gatsby Benchmarks

Average score Jan 2019



4 Case Study

City Careers Fair – Brighton & Hove

Organised by American Express, Albion in the Community, Laing O'Rourke and Coast to Capital and funded by Brighton & Hove City Council, Albion in the Community and The Careers and Enterprise Company. The event was specifically to support the most disengaged students in the city by giving them the opportunity to meet employers and educators in a safe setting.

The fair was held at Amex Community Stadium and there were 45 exhibitors including Health Education England, The Grand Hotel & Hilton Hotel, Morgan Sindall, local further and higher education providers, independent training providers and many SMEs from the city and surrounding areas.

Each student was given a resource pack to help them understand the different sectors represented and a student card which was stickered by the stall holder once the student had had a meaningful encounter with them. This supports Gatsby Benchmark 5.

For the last 2 hours, the fair was open to ALL students and parents from across Sussex.

2.1 Gatsby Benchmarks

Coast to Capital Gatsby Benchmarks	Mar 2018	Dec 2018
1. Stable careers programme	27%	58%
2. Learning from careers and labour market information	47%	58%
3. Addressing the needs of each pupil	20%	67%
4. Linking curriculum to learning careers	80%	48%
5. Encounters with employers and employees	60%	47%
6. Experiences of workplaces	20%	52%
7. Encounters with further and higher education	7%	49%
8. Personal guidance	47%	60%

Taken from Compass reports submitted up to July 2018