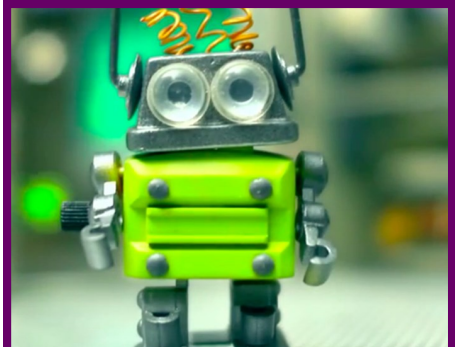




**Ministry of Housing,
Communities &
Local Government**

England European Regional Development Fund Programme 2014 to 2020

Supporting Local Growth 2018



European Union
European Regional
Development Fund

Welcome and Introduction

Welcome to the third annual edition of 'Supporting Local Growth' where we once again highlight a selection of projects from the 2014 to 2020 European Regional Development Fund (ERDF) programme in England. Managed by the Ministry for Housing, Communities and Local Government, the programme is helping to support the UK Government's growth priorities rebalancing the economy and supporting key initiatives such as the Northern Powerhouse and the Midlands Engine.

Programme update

Since March 2015 the current ERDF programme in England has been supporting projects across the country which boost business development and innovation and support local growth. Working closely with a broad range of partners, including Local Enterprise Partnerships, Local Authorities, Universities, other Government departments and the private sector, hundreds of projects have been awarded funding.

Within this booklet we showcase some completed projects to highlight what has already been achieved and include a selection of newer ones to offer a snapshot of the wide ranging business support activity the programme continues to support. A full list of projects funded can be found on the 'useful resources' page of the programme website - www.gov.uk/european-growth-funding

By the end of September 2018 £1,509m of the fund had been allocated to a total of 572 projects, with a further £786m worth of funding under consideration at that point. These projects are:

- Creating and safeguarding local jobs
- Supporting and improving the performance of small and medium sized businesses (SMEs)
- Creating new businesses, often exploiting new technology and innovation
- Supporting a shift towards a low carbon economy in all sectors
- Supporting local economic growth

ERDF is helping to support thriving communities by investing in our businesses, people and infrastructure. Every project in this booklet tells a story about a partnership, of councils, universities, voluntary groups, the private sector and other investors, coming together to bring additional funding and expertise alongside ERDF to tackle local issues. In some places, this is happening though powers devolved to city regions or small community groups. But everywhere ERDF is being locally driven by stakeholders committed to economic growth in their communities.

And with the Government's guarantee on this funding extended to cover the full programme period, projects that deliver good value for money and domestic priorities will continue to be agreed in local areas until 2020.

Calls for projects can be found on the above website within the interactive and fully searchable 'funding finder' tool.

The Ministry of Housing, Communities and Local Government is the managing authority for the England 2014 to 2020 ERDF programme.

Cover photos—various ERDF supported projects and businesses featured in this booklet

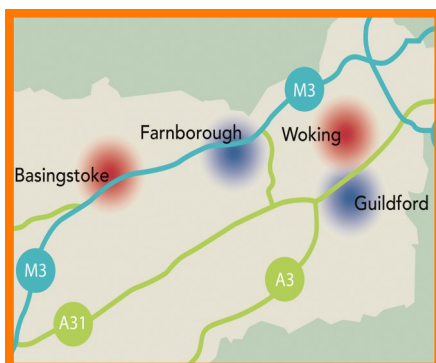
Research and Innovation



Cumbria Innovations Platform

ERDF £2.5m; Total project value £4.17m

The Cumbria Innovations Platform project, delivered by Lancaster University and the University of Cumbria, supports the growth of innovative SMEs in Cumbria. These include Pennine Pods, a family-run and Cumbria based pod business specialising in different and distinctive foam-fiberglass infused structures that are individually handcrafted. www.cumbriainnovations.org



Digital Business Acceleration Hubs, Enterprise M3 LEP area

ERDF £1.2m; Total project value £2.4m

This project is setting up a network of business acceleration hubs in the key growth cities/towns of Guildford, Basingstoke, Woking and Farnborough. Supported by the Enterprise M3 Local Enterprise Partnership, it will be delivered by the University of Surrey through SETSquared and local private and public partners.

www.setsquared.co.uk/start-support/digital-business-acceleration-hubs-programme



Enabling Innovation, Derbyshire and Nottinghamshire

ERDF £9.88m; Total project value £19.75m

This project is delivering an inclusive, joined-up programme of innovation support activities for SMEs across the Derby, Derbyshire, Nottingham and Nottinghamshire (D2N2) LEP area by combining the resources of three local universities with an emphasis on 'enabling technologies'. Involving Nottingham Trent University, the University of Derby and the University of Nottingham the project will deliver D2N2's innovation strategy Time to Innovate and will result in an increase in the number of SMEs bringing new products and processes to market.

enablinginnovation.org.uk



Engineering Innovation Centre (EIC), Lancashire

ERDF £5.8m; Total project value £9.67m

The Engineering Innovation Centre (EIC) will be a state-of-the-art facility, equipped to a high quality standard, on the Preston Campus of the University of Central Lancashire. Creating an integrated space for research and knowledge exchange, the facility will open in 2019.

www.uclan.ac.uk/research/engage/eic/index.php

Research and Innovation

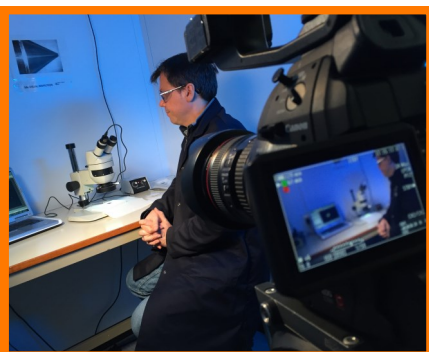


Greater Manchester Fund of Funds

ERDF £60m; Total project value £120m

This is a Fund of Funds to support the delivery of Urban Development and Low Carbon projects across Greater Manchester. The first Investment was a £12m loan awarded to Manchester Science Partnerships to co-finance Citylabs 2.0 on the Oxford Road corridor, a 92,000 sqft office and laboratory facility focussing on innovations in predictive and preventative medicine.

www.mspl.co.uk/campuses/citylabs/citylabs-20



Innovate Northamptonshire

ERDF £1.18m; Total project value £3.67m

The Innovate Northamptonshire project is increasing productivity, growth and competitiveness in Northamptonshire's SMEs by unlocking their potential through innovation. Focussing on key priority sectors for the county, the scheme will build an innovation culture, giving SMEs the knowledge, skills and support they need to innovate.

www.northamptonshiregrowthhub.co.uk/support/innovate-northamptonshire

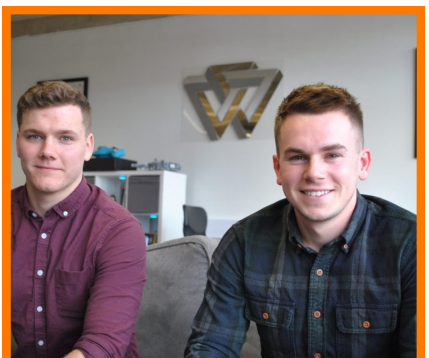


Innovation in Healthy Ageing Devon

ERDF £658k; Total project value £1.01m

The Innovation in Healthy Ageing Devon project supports private and voluntary organisations in the medical technology and health care sectors to fund the development of new products and services which could transform how people are cared for. A collaborative project also funded by Devon County Council, the South West Academic Health Science Network, West Devon Business Information Point and the University of Plymouth.

www.plymouth.ac.uk/research/innovation-in-healthy-ageing-devon



Innovation Programme for Greater Lincolnshire

ERDF £2.11m; Total project value £3.58m

Delivered by the University of Lincoln, this project is designed to enable micro, small and medium sized businesses to do things differently through grant funding, business support and collaboration with the academic capacity of the University. It is helping SMEs to innovate current projects and processes, but also to plan for the future, instilling a culture of innovative thinking.

lincsinnovation.co.uk

Research and Innovation - case study



INSTILS (Inspiring Networking to Stimulate Technology Innovation in Life Sciences), Derbyshire and Nottinghamshire

ERDF £2.03m; Total project value £4.06m

INSTILS provides SMEs with access to high value cutting edge expertise to support the creation of potentially ground breaking healthcare products.

NuVision® Biotherapies is a spin out company of The University of Nottingham. Established in 2015, to commercialise high quality and affordable biotherapies for treating ‘front of the eye’ disease, trauma and broader wound care. It’s regenerative therapy Omnigen® has already been supplied to over 150 clinical and veterinary centres worldwide as it is easily shipped, stored and is simple to use.

“Expanding our business, NuVision has now successfully taken Omnigen-regeneration into the clinic through the development of OmniLenz, an innovative bespoke contact lens. Furthermore, through the INSTILS project, run by Medilink East Midlands and part funded by ERDF and the East Midlands Academic Health Science Network, a pilot clinical study to evaluate Omnigen for the treatment of non-healing Diabetic Foot Ulcers is almost complete and is showing very promising results.

“If proved successful, this would accelerate the growth of the company, create four new jobs and expand NuVision’s market offer into the extensive wound care Market.”

Dr Andrew Hopkinson, CEO, NuVision® Biotherapies

www.medilinkem.com/projects/instils-derby-notts

Research and Innovation



Innovation Support for Business Programme, Oxfordshire

ERDF £2.58m; Total project value £5.16m

The Innovation Support for Business Programme (ISfB2) project assists the development and commercialisation of innovative business ideas within SMEs, as well as enhancing research and innovation infrastructure in Oxfordshire. Building on the success of phase 1, the project offers a portfolio of help for eligible entrepreneurs, start-ups and businesses to encourage innovation.

www.oxfordshirelep.com/isfb



LCR 4.0, Liverpool

ERDF £4.24m; Total project value £8.49m

A manufacturing knowledge transfer programme with a vast range of facilities and expertise which will drive innovation within Liverpool City Region SMEs. Provides a unified and transformational programme which will help them adopt 4.0 technologies and support the associated supply chain. Will create jobs, support local economic growth and create a national identity for LCR 4.0, as a sophisticated cluster of organisations engaged in 4.0.

lcr4.uk



Manchester Fuel Cell Innovation Centre

ERDF £1.65m; Total project value £3.3m

A new technology hub, officially opened in September 2018, leading the way in harnessing renewable energy. The Centre is exploring the pure science of the fuel cell itself, driving engagement with industry on a local, national and international scale, and developing the technology talent of tomorrow. A Manchester Metropolitan University led project.

www2.mmu.ac.uk/fuel-cell



Next Business Generation - Life Science Support Programme, Cheshire

ERDF £881k; Total project value £1.76m

This project will run the BioHub at Alderley Park, Cheshire, helping to create and grow successful life science companies. This is achieved by creating the optimum environment for emerging businesses to thrive by offering world class state-of-the-art laboratories and commercial office space, shared services, training, business support and access to investment.

biocity.co.uk/biohub-alderley-park

Research and Innovation - case study



Product Innovation Accelerator, Coventry and Warwickshire

ERDF £1.16m; Total project value £2.32m

This project is helping SMEs to undertake research and development and create, test and demonstrate new marketable products that are based on new technology and applications. It is helping companies solve real industry problems, de-risk new ideas, be more innovative, implement new processes and launch new products. The project will also address technology challenges, exploit market opportunities and help unlock SME potential, using proven delivery models consistent with the businesses taking part.

It has helped businesses like Pashley Cycles who saw an opportunity to develop a new bike in the London Cycle Hire scheme operated by Serco. Strong support resulted in Pashley being selected as the sole supplier for the next generation of London Cycle Hire bicycles, landing a five-year contract that secures 50 jobs at the company.

The Product Innovation Accelerator is delivered by the WMG SME Group - a dynamic team based at the University of Warwick, pioneering university support for innovation in SMEs. They accelerate productivity and growth in SMEs by helping them utilise research-led tools and techniques, building profitable and collaborative relationships.

www.cwlep.com/project/product-innovation-accelerator

Research and Innovation



Porton Science Incubator, Wiltshire

ERDF £2.99m; Total project value £6.86m

The Porton Science Incubator, which was officially opened in September 2018, is a health and life sciences incubation and innovation centre in South Wiltshire. It will provide on-site business support and a number of companies have already taken up residence at the park including Ploughshare Innovations, KalVista, Flurogenics and Immunotec.

www.ukspa.org.uk/members/porton



Productivity and Innovation Centre, Lancashire

ERDF £586k; Total project value £1.03m

Led by Edge Hill University, this project delivers an output driven programme of intensive workshops, with accompanying support from academic subject experts, which take SMEs through a rapid innovation process. Aims to embed highly effective rapid innovation processes and help SMEs release new to firm and new to market product, service or process innovations.

www.edgehill.ac.uk/pic



REACTOR, Greater Cambridge and Greater Peterborough

ERDF £504k; Total project value £1.008m

Stimulating innovation based economic growth by creating a cross-disciplinary, business led ecosystem to underpin the creation of an 'applied games' sector. Provides expertise and support to new start-ups and SMEs to enable them to innovate new products through the application of games technologies, creative digital methodologies and knowledge exchange. Delivered by Anglia Ruskin University.

www.anglia.ac.uk/business-employers/knowledge-exchange/reactor



STEAMhouse, Birmingham and Solihull

ERDF £1.76m; Total project value £3.53m

STEAMhouse is a unique new space for innovation through interdisciplinary collaboration powered by Birmingham City University. It is driving innovation and research for major long-term growth bringing inventors, entrepreneurs, businesses and craftspeople together to develop exciting new ideas and products. Based in the former car showroom on Digbeth High Street it features a range of new state-of-the-art facilities which people can access for free.

www.bcu.ac.uk/business/steam/steamhouse

Research and Innovation - case study



Advanced Manufacturing Innovation District, Sheffield

Royce Translational Centre (RTC) ERDF £4m; Total project value £8.01m

Laboratory for Verification and Validation (LVV) ERDF £3.12m; Total project value £7.55m

Infrastructure Research Centre (ICAIR) ERDF £2m; Total project value £6.78m

In October 2018 Northern Powerhouse Minister Jake Berry MP and Mayor of the Sheffield City Region Dan Jarvis MP opened the University of Sheffield's three new multi-million pound research centres which aim to boost the region's reputation as a hub for advanced engineering and industrial digital technologies.

The centres - the Royce Translational Centre (RTC), the Laboratory for Verification and Validation (LVV), and the Integrated Civil and Infrastructure Research Centre (ICAIR) - are located within the heart of the Sheffield City Region's Advanced Manufacturing Innovation District, a key element of the emerging Global Innovation Corridor that stretches across the Sheffield City Region.

Northern Powerhouse Minister, Jake Berry MP (pictured above left), said: "These three new research centres will boost the reputation of the Northern Powerhouse for being the world-leader in cutting-edge research, innovation and advanced engineering. Each centre will build upon the UK's scientific research leadership to equip industry in these key priorities of the Government's Industrial Strategy so that we have a high-skilled, high-tech, high-performance economy which is fit for the future."

Working with companies to help develop new technologies, the centres will use the transformational power of research to cut costs and lead times which will revolutionise industrial processes. Each one builds upon the UK's scientific research leadership to equip industry in these key priorities of the government's Industrial Strategy.

icair.ac.uk / lvv.ac.uk

www.sheffield.ac.uk/materials/centresandfacilities/royce/1.753443

Research and Innovation - case study



Sensor City, Liverpool

ERDF £5m; Total project value £10.47m

Sensor City is a collaboration between Liverpool John Moores University and the University of Liverpool and is a flagship project within the University Enterprise Zone, enabling industry and academic partners in a range of sectors to translate innovative sensor concepts into commercially viable solutions.

From the purpose-built base in Liverpool, opened by Business Minister Greg Clark in November 2017, it offers existing companies and budding entrepreneurs the technical expertise, business support and international platform needed to collaborate, fund and promote sensor solutions to a global market. It works intelligently, creatively and collaboratively to develop a connected sensor community and make Liverpool a global hub for sensor technologies.

Support provided includes access to purpose-built accommodation, high-end facilities and hands-on technical support for new prototype developments.

The Sensor City building has been designed and space-planned to encourage collaboration on every level. The high specification office and lab suites are inter-mixed with the very latest tech laboratories, hot desking suites, meeting rooms, breakout areas and events space.

The innovative design of the building means that it has many sustainable features including energy efficient chilled beams in the suites, low energy LED lighting and photovoltaic panels on the roof.

The building also allows for natural light to flow through each floor from top to bottom, whilst externally, Sensor City's 'Fields of Gold' glass cladding makes it an exciting new focal point on Liverpool's skyline.

www.sensorcity.co.uk

Research and Innovation



Sussex Business Research Academic Innovation Centre (BRAIN)

ERDF £600k; Total project value £1.2m

This project, led by the Sussex Innovation Centre, is developing a business research and academic innovation network across the Coast to Capital region. It will help innovative local start-ups and researchers to connect and collaborate with the large organisations and corporates based in the region. The partnership is facilitated by the Sussex Innovation support team and based between the two hubs in Falmer and East Croydon.

www.sinc.co.uk/brain



Thames Valley Science Park, Berkshire

ERDF £5m; Total project value £13.38m

The University of Reading owned venue, which opened in February 2018, is a lively community of ambitious, knowledge-based companies close to Heathrow and London. Here you'll find cutting-edge laboratories, flexible office space and both the expertise and opportunity for larger companies to develop bespoke office or R&D facilities. All set within a relaxed, campus-style environment.

www.tvsp.co.uk



West London Food Innovation Lab

ERDF £739k; Total project value £1.48m

The University of West London project provides support for Greater London-based start-ups or SMEs in the Food and Beverage sector by turning innovative ideas into winning products. It supports new product development and re-formulation of existing products by taking a new innovative approach support through culinary experts, lab scientists and technicians and access to the West London Food Innovation Labs facilities.

www.uwl.ac.uk/for-business/access-our-expertise/west-london-food-innovation-laboratory

Digital Connectivity



Digital Enterprise, Leeds City Region

ERDF £4.23m; Total project value £8.46m

Helping SMEs gain a competitive edge by offering an innovative package of support to improve digital capabilities as they look to scale up and improve productivity and awareness. It has helped Arville Textiles (pictured) by awarding £9,000 to help the business grow and create new jobs by funding new digital systems that will streamline internal communications systems and increase efficiencies. www.digitalenterprise.co.uk

Business Support



biSU - Be Inspired Staffordshire University

ERDF £600k; Total project value £1m

Building on the success of the ERDF SPEED Plus project, biSU provides a highly skilled and knowledgeable 'one stop shop' to promote and support entrepreneurialism amongst the student / graduate population in the Staffordshire and Stoke-on-Trent area. Aiming to create 100 graduate led businesses and 100 full time equivalent new jobs.

www.beinspiredatstaffs.ac.uk/bisu



Business Growth Programme, Birmingham City Council

ERDF £16.27m; Total project value £32.55m

The project is targeted at existing SMEs ready to invest, grow and create jobs across the Greater Birmingham & Solihull, Stoke-on-Trent & Staffordshire and The Marches Local Enterprise Partnership areas, offering four strands of grant support of £10k - £167k. Has helped hundreds of companies to fulfil their expansion plans, including Reliance Medical (pictured), a first aid product company supported to diversify into the rail sector.

www.birmingham.gov.uk/bgp



Cornwall and Isles of Scilly Investment Fund

ERDF £32m; Total project value £40m

Launched in June 2018 and delivered by British Business Bank (BBB), CIOSIF, provides commercially focussed finance through a Debt and Equity Fund, managed by an appointed fund manager. The fund aims to transform the finance landscape for smaller businesses in the area and to realise the region's potential to achieve economic growth through enterprise. Pictured - the Cornwall Camper Company, investee through BBB's Start Up Loans programme.

www.ciosif.co.uk



Collaborate - for Business Growth, Leicestershire

ERDF £3.1m; Total project value £7.3m

Collaborate is delivering a comprehensive business package incorporating support, grants and inward investment to help local SMEs grow, develop new jobs and bring new products to the market. It is helping businesses like Gokul Foods (pictured) who with support from Collaborate partner, The Food and Drink Forum, have implemented a HACCP system which enabled them to expand further and introduce a frozen food range.

www.llepbizgateway.co.uk/collaborate-business-growth

Business support - case study



**The Enterprise Space for Advanced Manufacturing,
Carludon Technology Park, St Austell, Cornwall
ERDF £6.24m; Total project value £8.25m**

The Enterprise Space for Advanced Manufacturing (ESAM) is a flagship development at the centre of a large-scale regeneration scheme in Carclaze, St Austell, Cornwall. The project has delivered 2,300m² of flexible workspace which is targeted at both start-up and growing businesses within the advanced manufacturing and engineering sectors. The project was led by Cornwall Council, which also provided £2.3m in funding as match for the European Regional Development Fund. Investment.

The building provides a combination of offices, workshops and industrial units and offers businesses a productive and modern workspace in which they will be able to increase productivity and maximise their growth potential. Businesses will be supported to collaborate and given direct access to wider business support programmes and initiatives through other ERDF investments, such as the Cornwall & Isles of Scilly Growth Hub. Their success and the opportunity to create many new skilled jobs will in turn support the prosperity of people living in the local area, and throughout Cornwall.

ESAM is built on land which had been left redundant from the china clay industry, in an area steeped in Cornwall's industrial history. The development forms part of a proposed garden village on the wider West Carclaze site, which will regenerate further post-industrial land into a major new mixed-use community comprising new homes, school, shops, health and community facilities and other public amenities.

The project is the result of more than 8 years of planning, development and delivery involving a range of partners from across the public and private sectors. Its successful delivery demonstrates what can be achieved through a long term commitment to a strategic vision for the future of industry and business embedded within our local communities.

esamcornwall.co.uk

Business Support



Core Growth Hub, Gloucestershire

ERDF £1.67m; Total project value £3.35m

University of Gloucestershire run project addressing challenges in business support across the county, building on current growth hub provision within the GFirst LEP area. Aligns with the Government's national policy on supporting LEP growth hubs and offers excellent value for money with outputs well ahead of benchmarks. Operated from brand new facilities opened in September 2018.

www.thegrowthhub.biz/gloucester-growth-hub



Coventry and Warwickshire SME Growth Programme

ERDF £4.64m; Total project value £15.05m

Package of business support services, tailored to meet the growth dynamics of Coventry & Warwickshire SMEs. Cogsdill (pictured), who have had a Nuneaton base for over 60 years, secured funding for crucial equipment - a £120,000 Doosan milling machine and a £45,000 Co-Ordinate Measuring machine - just weeks after contacting the SME Growth Programme for assistance.

www.cwlep.com/project/business-support-programme



Essex Growth Programme

ERDF £1.21m; Total project value £2.61m

A successor to the successful Ready, Set, Go and From Hub to Spokes ERDF projects, integrating three core elements corresponding to need at different stages of business development: intensive support for pre-start individuals, tailored support for those new/established SMEs best-placed to unlock growth and discretionary grants to catalyse investment in growth and efficiency.

www.southeastlep.com/project/essex-growth-programme



Export For Growth

ERDF £8.56m; Total project value £15.05m

A business support project focused on enhancing SME international trade performance in the Cornwall and the Isles of Scilly, Dorset, Gloucestershire, Heart of the South West, West of England and Swindon & Wiltshire LEP areas. Focussing on everything from export strategy and planning, to market research and funding options, thousands of businesses, including CPD for Teachers (pictured), have started their export journey with Export for Growth.

www.export4growth.co.uk

Business support - case study



Manufacturing Growth Programme (MGP), multiple regions

ERDF £10.46m; Total project value £20.07m

Delivered by Economic Growth Solutions (EGS), the MGP provides access to specialist assistance to help manufacturers to grow and improve through a 19-strong network of experienced Manufacturing Growth Managers, access to industry specialists and the opportunity to apply for grants of up to £3,500. The programme operates in the West Midlands, Yorkshire and Humber, parts of the East Midlands, South East and East of England.

The national thirst for healthier food and drinks has helped a young entrepreneur more than double her sales over the last twelve months.

26 year-old Alex Auger (pictured above left) founded The Juice Executive in 2014 and has just broken the £1m turnover mark after securing a number of new contract manufacturing orders and the acquisition of 'Radiance Cleanse'.

The Kent-based manufacturer of cold pressed juices and cleansing packages has taken on another eight people to support its expansion and has also been tapping into the expertise of the MGP to help with strategy, structure and process flow.

It is already paying off, with the external guidance contributing to a new management structure that frees Alex up to focus on business development and securing sales.

And in Birmingham, with help provided by the MGP, AE Aerospace Ltd (pictured above right) has more than doubled its workforce, whilst sales have increased fivefold, as the company has capitalised on its specialist ability to prototype new components and retain volume manufacture in the UK.

The key to the company's success, according to Managing Director Peter Bruch, has been MGP's funding to support the development of the management team, which has created a new ethos.

www.manufacturinggrowthprogramme.co.uk

Business Support

Growth Support Programme, Heart of the South West

ERDF £905k; Total project value £1.59m



For entrepreneurs looking to generate more income and find more customers, this project provides an initial diagnostic and bespoke support through a partnership of business development organisations across Devon, Plymouth, Somerset and Torbay. One such entrepreneur is Sue Brown, owner of The Garden Shop (pictured), a micro-garden centre which has flourished into an expanding horticultural tourist destination, complete with a dog-friendly café, garden centre and gift shop.

www.heartofswgrowthhub.co.uk

Midlands Engine Investment Fund (MEIF)

ERDF £78.5m; Total project value £266.1m



Delivered by the British Business Bank in collaboration with the 11 Midlands LEPs, MEIF is boosting SME growth in the Midlands, providing commercially focussed finance in the form of Small Business Loans, Debt Finance, Proof of concept and Equity Finance funds. Birmingham based Aceleron have achieved a world first by developing a lithium battery which can be fully serviced to give it a much longer lifetime. A MEIF loan of £150,000 will be used to help them launch the product. www.meif.co.uk

North East Fund

ERDF £58.5m; Total project value £140m



Opened for business in early 2018, providing finance through microfinance, Debt and equity finance funds across Gateshead, Newcastle, Durham, Northumberland, North Tyneside, South Tyneside, and Sunderland. There are five funds, each with a different investment focus to suit the needs of SMEs depending on the sector in which they operate and where they sit on the growth curve. www.northeastfund.org

RAISE, Black Country

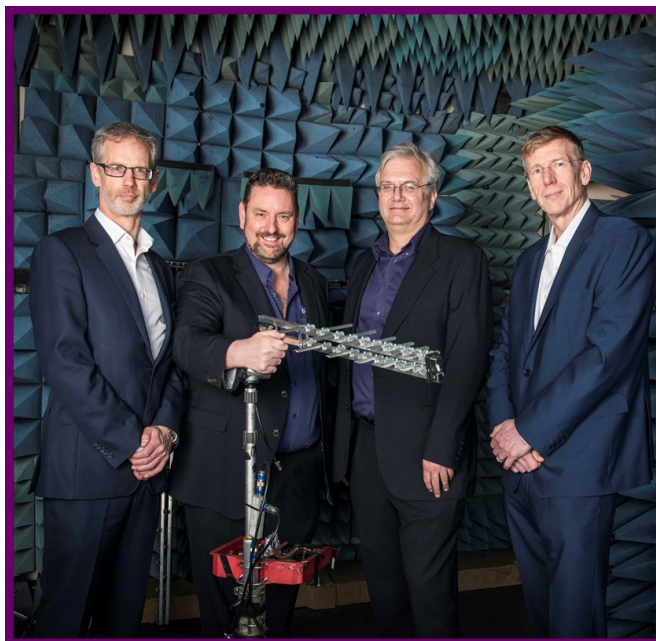
ERDF £644k; Total project value £1.29m



RAISE (Raising Aspirations Inspiring Self Employment/Social Enterprise) is increasing the business birth rate (BBR) across the Black Country, specifically supporting early stage entrepreneurs from underrepresented groups including women, BME communities and people experiencing physical and sensory impairment. Delivered by Wolverhampton based Access to Business and the Skills Work and Enterprise Development Agency (SWEDA).

www.bcta.org.uk/case-study/raise-raising-aspirations-inspiring-self-employment-and-social-enterprise

Business support - case study



The Northern Powerhouse Investment Fund (NPIF), multiple regions

ERDF £140.4m; Total project value £402m

Delivered by the British Business Bank in collaboration with ten Local Enterprise Partnerships in the North West, Yorkshire and Humber and Tees Valley, NPIF is a key part of the Government's 'Northern Powerhouse' vision. NPIF provides commercially focussed finance through Microfinance, Debt and Equity Finance funds. Case studies include:

Liverpool-based CEMOS Solutions Limited (above left), a cloud-based digital platform developer, has received £150,000 of equity funding from NPIF Maven Equity Finance, which is managed by Maven Capital and part of the Northern Powerhouse Investment Fund.

CEMOS use their platform to create mobile applications that are tailored for health, fitness and wellbeing. Their first digital product, Get Event Fit, helps charities better prepare their fundraisers by providing them with comprehensive training programmes. This includes running fitness, sports nutrition, mindset education and daily motivation which are delivered into the Get Event Fit app to educate, inspire and keep them motivated throughout their training.

The deal will allow the company to diversify its Get Event Fit offering with additional training programmes for cycling, swimming, triathlon and trekking, whilst also developing new health and wellbeing products. CEMOS will use the funding to more than quadruple its headcount over the next three years and drive international expansion by targeting overseas charities and brands to collaborate with.

And over in Sheffield Blake UK (above right), one of the largest manufacturers and suppliers in the TV/AV sector, secured £100,000 to fund new product development and invest in new equipment. These funds have enabled them to increase product range and bolster stock to meet strong customer demand for products. The funding came from NPIF - Mercia Debt Finance, an NPIF fund managed by Mercia Fund Managers.

www.npif.co.uk

Business Support



Resource Efficiency Fund, Leeds City Region

ERDF £1.14m; Total project value £2.8m

The Resource Efficiency Fund supports SMEs to lower energy usage, reduce water and waste costs and minimise their impact on the environment. The Resource Efficiency Fund provides financial support and advice for SMEs looking to become more resource efficient in the way they do business. Can offer free efficiency assessments, hands-on business support and up to 50% capital grant funding of up to £10,000 to help money and resource savings.

www.the-lep.com/for-business/ref



The Shell Store. Hereford's Technology Incubation and Development Application Centre

ERDF £2m; Total project value £6.5m

The Shell Store is a derelict, former First and Second World War munitions facility located on Skylon Park, Hereford Enterprise Zone. The project will transform the building into a business incubation and university application centre. It will provide over 2,000 sq metres of commercial floor space for new and growing businesses and a project development facility for Hereford's new university. The centre, which will open in 2020, will facilitate dynamic enterprise development, innovation as well as contributing to local economic growth and job creation.



South East International Business Growth

ERDF £1.9m; Total project value £3.8m

This project, delivered by Newable with the Department for International Trade (DIT) South East Region, aims to enhance the competitiveness of SMEs within the West Sussex, Hampshire, Surrey and Oxfordshire areas in international markets and will achieve this goal by providing these SMEs with the expertise and support needed to break into the global market place.

www.newable.co.uk/exporting/south-east-international-business-growth.php



Tees Valley Business Compass

ERDF £998k; Total project value £1.66m

The Tees Valley Business Compass is a one stop shop for business support and funding to help your business grow if you're based in Darlington, Hartlepool, Middlesbrough, Stockton or Redcar and Cleveland. Paul Swift Precision Driving, a Darlington-based high-performance stunt driving school, secured funding from Business Compass to enhance a digital marketing campaign.

www.teesbusinesscompass.co.uk

Business Support

Vantage Riverside Park, Sheffield



ERDF £1.91m; Total project value £6.38m

The speculative development of a new 10,209m² business park for knowledge based start-up businesses within 15 new build hi-tech units in a mix of sizes from 445m² to 1,358m². Forms part of the Sheffield City Region Local Enterprise Partnership's drive to increase inward investment and private sector jobs by ensuring the right commercial property offer is available for expanding local companies and businesses looking to locate in the area.

Velocity, South East Midlands



ERDF £2.08m; Total project value £4.15m

The Growth Hub for the South East Midlands, Velocity is joining up, simplifying and strengthening support to increase growth among existing enterprises and increasing investment in the area by foreign-owned enterprises. Bambino Mio, a husband and wife run re-usable nappy brand, received support from Velocity to improve their marketing sales system and have seen sales triple in the past two years.

www.velocitygrowthhub.com

Promoting Social Inclusion

North Lincolnshire Community Led Local Development (CLLD)



ERDF £441k; Total project value £748k (£2.2m including ESF element)

The project, co-funded with European Social Fund (and worth over £2 million when including their element of the project), will fund the delivery of the North Lincolnshire CLLD Local Development Strategy. It will support the unemployed and economically inactive to get back into work, while creating new and supporting existing businesses. It will help support businesses to enable them to be more accessible and will also be used to provide training and improve skills.

investinnorthlincolnshire.com/funding/clld-programme

Low Carbon / Environment - case study



BEE Anglia, Suffolk and Norfolk

ERDF £3.26m; Total project value £6.52m

The Business Energy Efficiency (BEE) programme provides free support to eligible organisations in Suffolk and Norfolk to help them become more energy efficient. Support is available in the form of free energy reviews, grant funding and fully funded Carbon Charter Accreditation.

Based in Bury St Edmunds, Kiezebrink UK are one of the largest suppliers of exotic animal food and raw meat diets in the UK. They have recently been awarded grant funding from the Business Energy Efficiency (BEE) Anglia project to increase their processing and freezer storage facility.

Following an independent energy audit, Kiezebrink UK successfully applied for a grant of £17,000. The energy savings gained by implementing this project will amount to 37.7 CO₂e per year, plus cost savings of £7,500. This will support future growth within their business, while working to protect our environment.

“Without the funding supplied by BEE Anglia we wouldn’t have been able to afford the extra cost of installing energy saving freezer condensing units, frequency inverters and LED lighting. Our aim is to grow the company without having any increased impact on the environment. Hopefully implementing these energy saving techniques has helped us achieve this goal.”

Alasdair Gordon, Operations Director at Kiezebrink UK.

www.beeanglia.org

Low Carbon / Environment



BECCI, Black Country

ERDF £638k; Total project value £1.23m

The Built Environment Climate Change Innovations (BECCI) project, managed by the University of Wolverhampton, helps to reduce carbon emissions by supporting SMEs to develop and implement their low-carbon innovations within residential housing and commercial buildings. Wolverhampton based SME Ecolec recently had their radiant heating systems tested through the project (pictured), helping them to better meet client needs.

www.wlv.ac.uk/becci



Cornwall and Isles of Scilly Local Energy Market

ERDF £13m; Total project value £18.74m

The electricity grid in Cornwall is heavily constrained. There is simply too much generation and not enough network to accommodate the export of energy. This project, led by Centrica, will design and build a local marketplace platform for the network to request, and the market to provide flexible demand, generation and storage to help optimise capacity on the local grid.

www.centrica.com/innovation/cornwall-local-energy-market



Dorset Low Carbon Economy Programme

ERDF £3.22m; Total project value £6.44m

A three year programme of activities to help stimulate growth in Dorset's low carbon economy, offering free technical support and grant funding for energy efficiency and renewable energy projects. It is helping improve energy efficiency, increasing the use of renewable energy, and aiding the development of new low carbon products across Dorset, Bournemouth and Poole.

www.lowcarbondorset.org.uk



HEIGHTS, Gateshead

ERDF £4.67m; Total project value £10.53m

The High-rise Energy Infrastructure for Gateshead Housing Tenants (HEIGHTS) project will see new energy efficient heating systems installed to seven high rise housing blocks in Gateshead town centre and the Harlow Green/Allerdene Ward. The project will help to reduce fuel poverty for local people with the supply of lower cost energy to over 600 households and a 57% reduction in greenhouse gas emissions in the local area.

www.gateshead.gov.uk/article/3524/HEIGHTS-project

Low Carbon / Environment



Hertfordshire Low Carbon Innovation Network

ERDF £630k; Total project value £1.26m

Boosting the opportunities for low carbon innovation in the built environment by bringing together networks of potential buyers who are actively looking for innovations which could lower their carbon emissions. Shared customer needs are identified and SMEs offered the opportunity to respond directly to those challenges. Eligible SMEs who participate in the project receive a programme of innovation support, provided by BRE, before being shortlisted to pitch. www.hertslowcarbon.org



Low Carbon Opportunities Programme, Worcestershire

ERDF £1.19m; Total project value £2.39m

Offers free renewable energy or low carbon innovation assessments and grants to SMEs. Through the programme, SMEs in Worcestershire are being enabled and encouraged to adopt renewable energy, with free feasibility support followed by grants to install a renewable energy system. Other SMEs are being helped to innovate and grow in, or diversify into, the low carbon sector - includes the opportunity to attend networking events. www.business-central.co.uk/locop



Low Carbon Workspaces, Buckinghamshire Thames Valley

ERDF £2.5m; Total project value £5m

The Smart Measures in Local Enterprise (SMILE) project is helping SMEs across Buckinghamshire to reduce energy costs and carbon footprints. Capital and revenue grants are being provided to enable the introduction of energy efficiency changes to business premises and processes.

www.lowcarbonworkspaces.co.uk



The Mayor of London's Energy Efficiency Fund (MEEF)

ERDF £43m; Total fund value £500m

Launched in July 2018, MEEF is a new investment fund established by the Greater London Authority which will help achieve London's ambition of being a zero carbon city by 2050. It will provide support to the low-carbon, sustainable projects and infrastructure projects London needs to cut energy costs and reduce carbon emissions through flexible and highly competitive finance.

www.amberinfrastructure.com/our-funds/the-mayor-of-londons-energy-efficiency-fund

Low Carbon / Environment

Sowerby Environmental Space Project, York, North Yorkshire and East Riding

ERDF £643k; Total project value £1.42m



A multi-million pound project to create a sports village on the outskirts of Thirsk in North Yorkshire. The ERDF funding, along with developer contributions from the Sowerby Gateway development, will be used to reclaim the land in the first phase of work to bring the land into informal recreational use. The Sowerby Sports Village is part of the Gateway scheme which is creating retail, leisure, employment land, care provision and more than 900 new homes in the area.

hambletondc.maps.arcgis.com/apps/MapJournal/index.html?appid=81594e510fa54cbea4e52347e279e945

Sustainable Technologies Business Acceleration Hub, West of England

ERDF £732k; Total project value £1.46m



Delivered by the University of Bath, this project offers bespoke business support and coaching to help innovative companies in the West of England achieve their potential. It is open to growth businesses in all sectors who are interested in developing low carbon or sustainable technologies.

www.stbah.org

World Class Environment: World Class Industry, Humber

**ERDF £1.15m;
Total project value £1.92m**



North East Lincolnshire Council is taking ambitious steps to deliver strong economic growth in harmony with the local ecosystem, respecting and enhancing the character and distinctiveness of its habitats and landscapes.

In order to unlock over 200ha of industrial land with the potential to create 2,236 new jobs in the South Humber Gateway area, the council is ensuring that its ambitious plans are environmentally sensitive. As part of its work to develop a key strategic employment sites in the South Humber Gateway area, 122.5ha of land across eight sites is being enhanced to create suitable habitat for protected birds.

The council is designing, creating, managing and maintaining protected habitat to support birdlife in order to mitigate any potential detrimental impact as a result of the development of industrial land within the South Humber Gateway.

www.humberlep.org/project/world-class-environment-world-class-industry



**Ministry of Housing,
Communities &
Local Government**

Ministry of Housing, Communities and Local Government
2 Marsham Street
London
SW1P 4DF
0303 444 0000

Produced: November 2018



European Union
European Regional
Development Fund