

YOUR LONDON AIRPORT  
*Gatwick*

# Gatwick Business Update

Coast to Capital Partnership Board 6 December 2016

Simon Edwards  
Airline Business Development Manager



# Contents

- ➔ Government decision on runway
- ➔ Record breaking performance
- ➔ Capital investment programme
- ➔ Our journey to be the UK's most sustainable airport



We continue to offer Government the opportunity to expand Gatwick



# 2016/17 – a record breaking year

- 42 million passengers
- Breaking records every month
- 20 new long haul routes launched

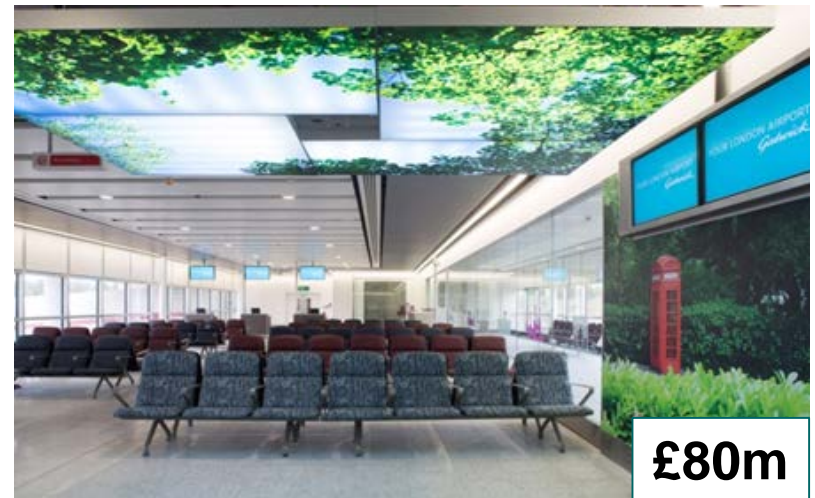


# Long haul growth in 2016

20 new long haul routes to cities on four continents, taking the number of long haul connections to 50 and moving Gatwick into the premier league of European airports



# £2.5bn investment programme



# Airline moves

- 3 airlines
- 3 days in January 17
- 84 construction activities
- 210,000 sq. ft. of tenanted space changing
- 161 IT systems checked
- 10,000 Gatwick based workers affected



**North or South?**

British Airways, easyJet and Virgin Atlantic are changing terminals in January.

Remember to check before you fly.  
Another part of Gatwick's transformation.

YOUR LONDON AIRPORT  
*Gatwick*

[www.gatwickairport.com/airlinemoves](http://www.gatwickairport.com/airlinemoves)

The advertisement features three stylized aircraft tails: British Airways (top), easyJet (middle), and Virgin Atlantic (bottom). The background is white with a teal footer containing the Gatwick logo and website URL.



# Additional rail capacity

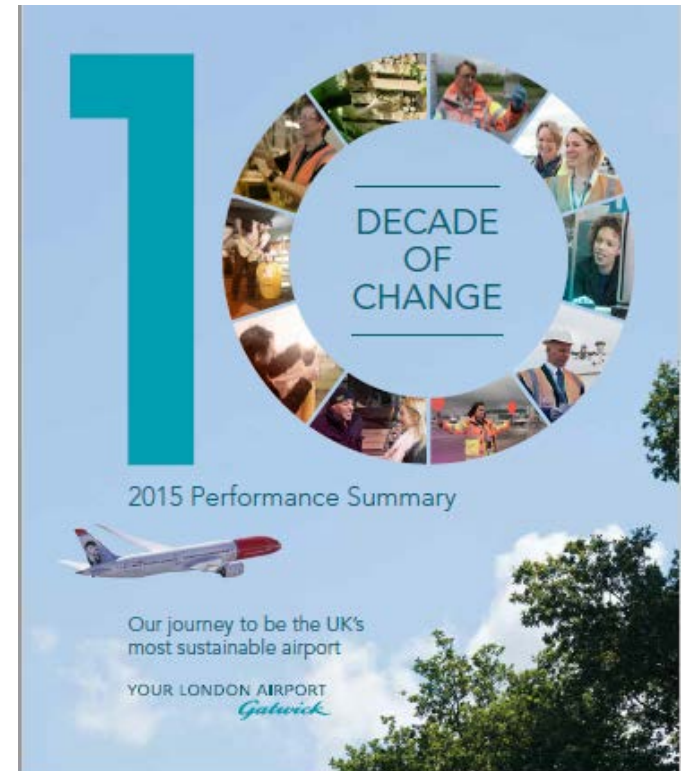
- A doubling of capacity in less than a decade
- New rolling stock and longer trains
- New state of the art signalling
- Oyster and contactless payment





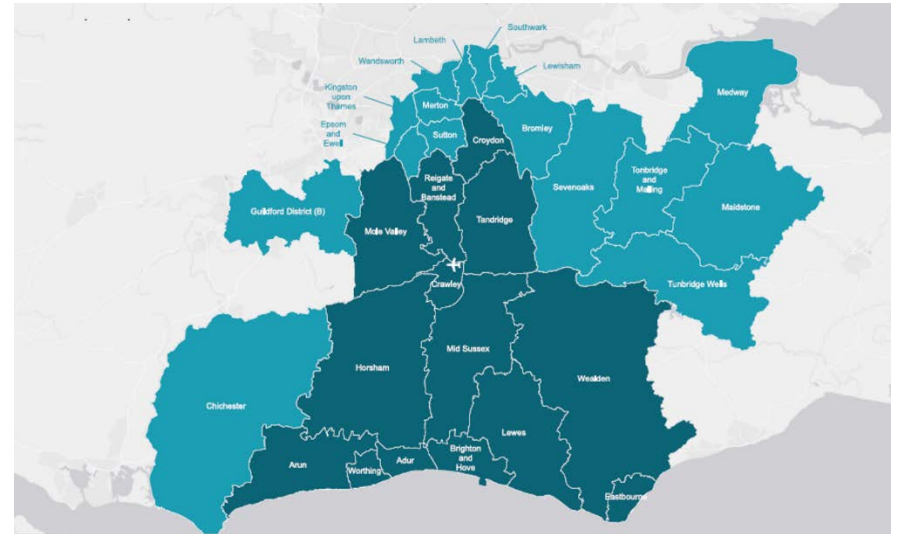
# Our journey to become the most sustainable airport in the UK

- Ten years, ten topics:
  - Carbon
  - Energy
  - Water
  - Waste
  - Air Quality
  - Transport
  - Biodiversity
  - Noise
  - Local economy
  - Local community



# Gatwick's role in the national, regional and local economy

- ➔ Relationships and partnerships
- ➔ Gatwick Growth Board analysing current and future contribution
- ➔ Direct local benefits through airport employment; supply chain; and transport investment



# In summary

- ➔ Gatwick's future is bright
- ➔ A thriving local economy
- ➔ Access to global air travel



YOUR LONDON AIRPORT  
*Gatwick*

