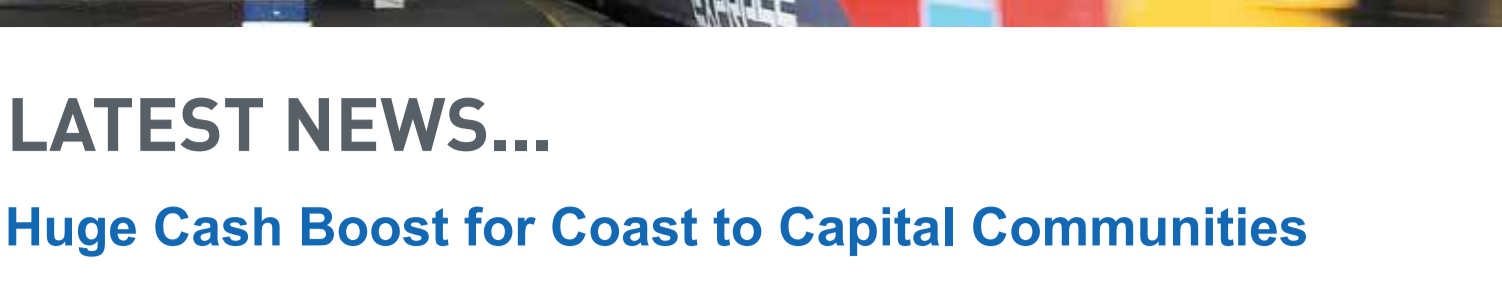


# Open for Business

WEST SUSSEX | CROYDON | BRIGHTON &amp; HOVE | LEWES | GATWICK DIAMOND



## LATEST NEWS...

### Huge Cash Boost for Coast to Capital Communities

Last week, we were delighted to announce agreement to an expansion of our Growth Deal with the Government which will see an extra £35.8m invested in our region between 2016 and 2021. One of the larger regional allocations in the UK, this sum is in addition to the £202.4m of funding committed by the Government last summer.

Key features of the expanded deal include:

- £17m for improvements to the A2300 Burgess Hill Link Road relieving congestion and unlocking up to 3,300 new homes and 5,000 jobs.
- £10m Gatwick Airport Station – Secures the redevelopment of the railway station at Gatwick Airport, a strategic local, national and international transport hub.
- £8m for a new Engineering and Digital Technology Park at the University of Chichester site in Bognor Regis, providing cutting edge skills to 500 students per year.
- £0.8m to bring forward smaller but locally significant redevelopment projects in Oxted, Caterham, Leatherhead and Epsom.

Read the full details [here](#):



Picture L to R: Henry Smith MP; Guy Stephenson (Gatwick Airport); Penny Mordaunt MP; Steve Allen; Ron Crank; Adam Love (Network Rail); Prof. Clive Behagg and Garry Wall.

### Hopes for Horsham Higher Education Centre

We've also been celebrating news that the University of Brighton is in talks to acquire the former Novartis site in Horsham where it plans to open a Higher Education centre. Our Chief Executive has been working behind the scenes to help secure a positive outcome for this important development site which could bring 2,250 new jobs and £1.7bn of investment to the region and provide around 3,500 new student places in the Gatwick Diamond.

"We are delighted that negotiations have commenced to bring new and exceptional training facilities to Horsham", said Ron. "The University's plans, if brought to a successful conclusion, will provide a fitting legacy with far reaching benefits for the next generation and the local and regional economy." Find out more [here](#).



## TOPICAL NEWS...

### Business Growth Grants generate hundreds of new jobs

Companies across our region have been expanding as a result of securing a Business Growth Grant. In 2014, some 39 businesses were awarded a slice of £2.2m for projects to help them expand, resulting in more than 300 new jobs for local people. The programme helps companies expand by supporting projects such as skills improvement, R&D and investment in equipment or premises.

Our Chairman Tim Wates is a strong supporter of the scheme. He said: "The first year of awarding business growth grants has reinforced the important role that SMEs play in our local economy. I've been really pleased to see the impact the grants are having and I look forward to seeing other projects becoming a reality in the near future. I would encourage any business in our region that has a sound expansion plan to contact our team to see if we can help."

The next round of funding is to be released in April - contact Hannah Gosling at [rgf@coast2capital.org.uk](mailto:rgf@coast2capital.org.uk) for more information.



One of the companies to benefit from a Business Growth Grant is Medical Imaging

### Backing Business Success

Growing a business is tough says Steve Allen, Vice-Chairman of Coast to Capital LEP. "From my personal experience, I am well aware that talking about business growth and making it happen are two different things. In 2001, I founded Prime Care Community Services Ltd and over the following 12 years grew the firm to employ some 1,000 employees. In the beginning, we faced numerous challenges in increasing our customer base and finding the right employees and partners. It was also a struggle to secure the finance to grow – but we did succeed, so that we were able to sell a larger company in 2013.

Now, as Brighton-based Vice-Chairman of Coast to Capital Local Enterprise Partnership, I am keen to help more companies grow and create new jobs. My colleagues and I are working hard to engender and maintain the right conditions for enterprise and high growth entrepreneurship to flourish."

Read more from Steve [here](#).

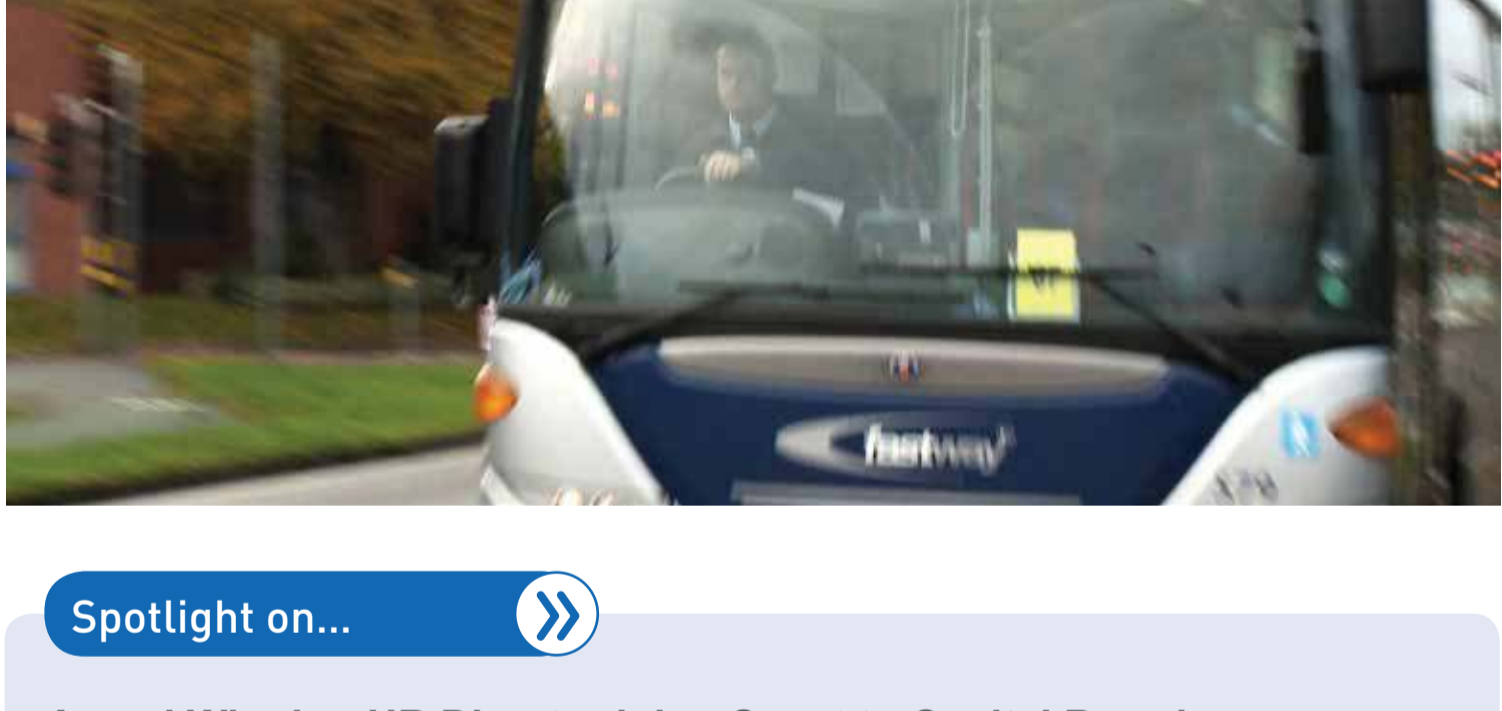


Steve Allen

## PARTNERSHIP IN ACTION....

### Let's Talk Transport...

We are seeking your views on a number of proposed transport schemes which could improve transport networks across the region. Coast to Capital is considering proposals for improvements to the local transport networks in its area, including new or improved roads, walking and cycling facilities and public transport improvements. Discover more online [here](#).



### Spotlight on...



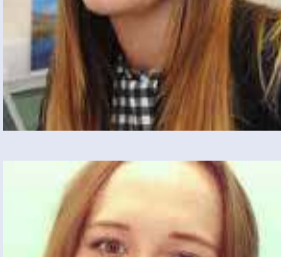
#### Award Winning HR Director joins Coast to Capital Board



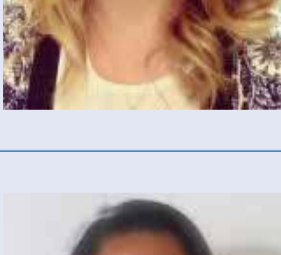
We are delighted to extend a warm welcome to **Amanda Menahem**, HR Director for Hastings Insurance Services Ltd who has recently been appointed to our Board of Directors. With a background in senior HR management roles, Amanda has a keen interest in local matters. She leads on a number of initiatives with both universities in Brighton to create mutually beneficial learning and employment opportunities.

Speaking on her appointment she said: "I look forward to working with the Coast to Capital team and partners to help create a deliverable skills strategy for the area in order to contribute to its economic growth and job creation drive. To achieve sustainable growth, the area's businesses will need to attract and retain the very best talent."

### Congratulations to...



We are delighted to see the continued career progression of **Hayley Shepherd** who has been promoted to a newly created role of Growth Deal Project Manager at Coast to Capital. Hayley will now assume responsibility for overseeing the Growth Deal projects, ensuring key project deadlines and targets are delivered.



We also congratulate **Hannah Gosling** who has also been promoted and will take over Hayley's previous role of Programme Manager.



We welcome **Marsha Robert** to the Team as our new Project Support Assistant. Marsha has recently completed her Master's degree in Public Administration from the University of Brighton. As part of her post-graduate degree she studied partnerships and partnership working and we are confident her academic knowledge will benefit the team and the Coast to Capital region. In her role she will work closely with Malcolm Brabon, Business Support Manager to increase engagement with the Business Navigator Growth Hub and attracting Foreign Direct Investment.

## COMING UP

### Big Bang Beckons

Are you getting involved with this year's Big Bang Fair South East which takes place on 30 June? The action-packed day of inspirational activities, shows and workshops aims to increase young people's enthusiasm for careers in science, technology, engineering and maths (STEM). It's hoped that the event will attract even more than the 5,300 youngsters who attended last year.

There are many ways businesses can support the event, from judging at the National Science and Engineering Competition to running an interactive exhibit, giving career talks or providing competition prizes. Discover more at [www.thebigbangfair.co.uk/southeast](http://www.thebigbangfair.co.uk/southeast)

### SEPnet Summer Placements 2015

Coast to Capital is a supporter of SEPnet (South East Physics Network), a consortium of 9 university physics departments - Hertfordshire, Kent, Portsmouth, Queen Mary, Royal Holloway, Southampton, Surrey, Sussex and Open University. The scheme is aimed at any organisations interested in recruiting physics graduates including large companies, research institutions and SMEs.

SEPnet organises an annual placement scheme for physics students at the above universities and is seeking 8-week projects in industry or research in areas such as data analysis, mathematic modelling, product design and testing or science communication.

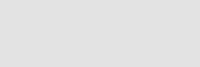
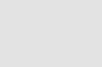
#### Benefits to employers

- Early access to bright, numerate students with excellent problem-solving and IT skills
- Enables you to carry out projects you would not normally have time for
- Provides a fresh perspective on your business challenges
- All advertising, administration and placement support is handled by SEPnet



Visit [www.sepnet.ac.uk/info\\_employers](http://www.sepnet.ac.uk/info_employers) for further information and to register your placement project, or projects, online by 14 February. Email [employerengagement@sepnet.ac.uk](mailto:employerengagement@sepnet.ac.uk)

### CONTACT US



To find out more on any of these news items or about our major themes email:

**Michael Harms** | Communications Officer  
Coast to Capital LEP  
[michael.harms@coast2capital.org.uk](mailto:michael.harms@coast2capital.org.uk)

Visit [www.coast2capital.org.uk](http://www.coast2capital.org.uk) for the whole picture or email:  
Ron Crank, Chief Executive [ron.crank@coast2capital.org.uk](mailto:ron.crank@coast2capital.org.uk)

