

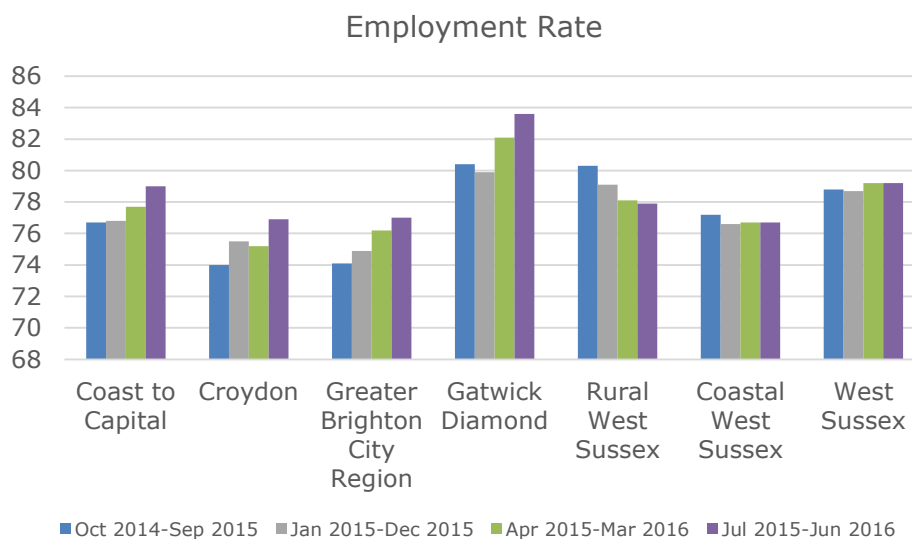
## **Coast to Capital Employment Dashboard - October 2016**

### **Main Points:**

- Coast to Capital regional Employment Rate is a record 79% - the highest rate recorded since 2004
- 976,100 residents in the Coast to Capital region are now in employment – a 19,100 increase since last quarter
- Coast to Capital regional Unemployment Rate rose a slight 0.2%, to 3.8%
- The number of unemployed residents in the Coast to Capital region is 40,400 – a rise of 2,800 since last quarter, largely due to an increased economically active population

## **EMPLOYMENT**

Since the previous quarter the employment rate has jumped to a new record 79% in the Coast to Capital region, improving on last quarter's record of 77.7%. The number of people in employment has increased by 19,100 over the last quarter, there are now 976,500 people employed in the Coast to Capital region. By comparison the UK employment rate is 73.7% and the South East region's employment rate is 77.3%. Over the last quarter employment has risen by 0.1% in the UK, 0.1% in the South East, and 1.3% in Coast to Capital.

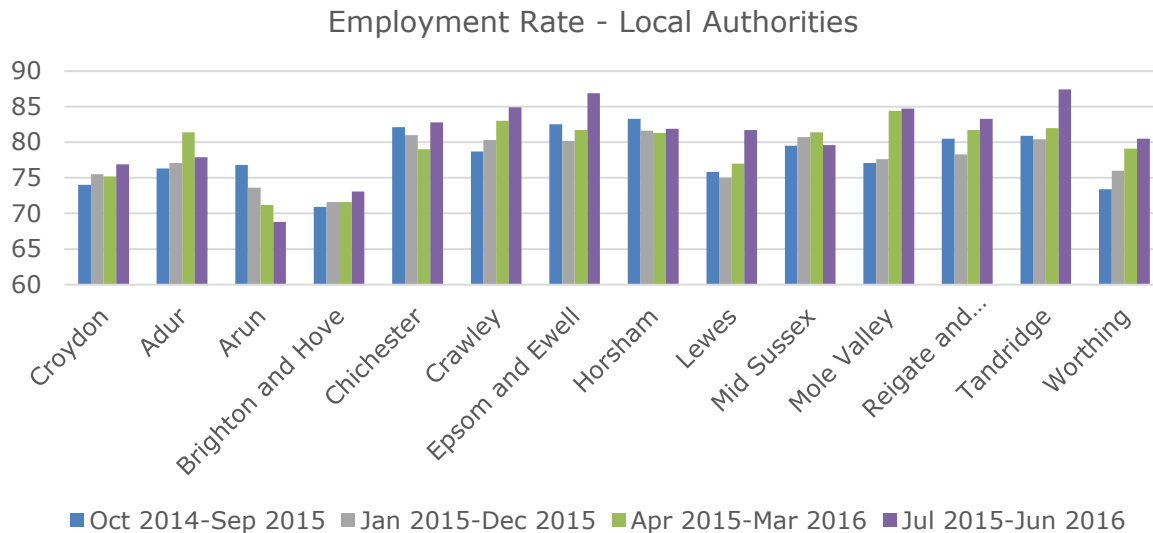


**Figure 1 – Employment Rate in the Coast to Capital region - Source: Annual population survey October 2016**

Across the Area Partnerships<sup>1</sup> employment performance is more mixed. In Croydon there has been a 1.7% rise in employment over the quarter, in the Gatwick Diamond area there was a 1.5% rise in employment, and in the Greater Brighton City region there was a 0.8% rise. Whereas in Rural West Sussex there

<sup>1</sup> More information about the make-up of the Area Partnerships is at the end of the document

was a 0.2% drop in employment last quarter, continuing a four quarter decline in employment down from 80.3% to 77.9%. In Coastal West Sussex and West Sussex as a whole there was no change quarter on quarter.



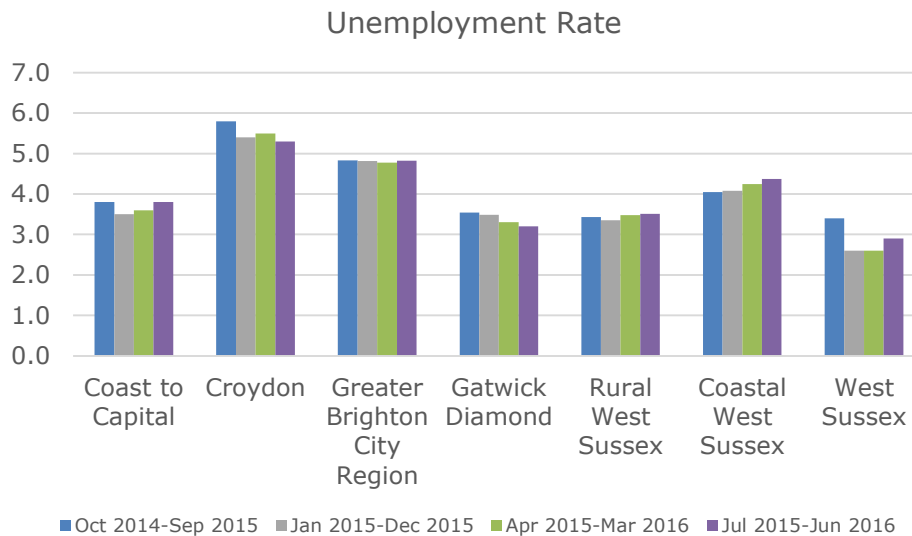
**Figure 2 – Employment Rates in Local Authorities – Source: Annual population survey October 2016**

Figure 2 shows the employment rate at the Local Authority level and highlights the local variations. In Arun there has been four quarters of falling employment rates, in Arun the rate has fallen by 2.4% in the last quarter down to 68.8%. There has been a 3.5% fall in Adur, following 4.4% rise in the previous quarter, the overall employment rate is still higher than a year ago however. There was also a fall of 1.8% in Mid Sussex, the only other area to see a decline in employment over the quarter. Aside from Arun, any downward trends have been halted this quarter.

One off rises or falls in the employment rate should be treated with caution as the margin for error increases at lower geographic levels, such as Local Authority areas, most notably the 5.4% rise in Tandridge, the 5.2% rise in Epsom and Ewell, and the 4.7% rise in Lewes over the last quarter. Focusing more on the trends of the last four quarters highlights good performance in Croydon, Adur, Crawley, and Worthing.

## UNEMPLOYMENT

The Coast to Capital unemployment rate is now 3.8%, a slight 0.2% increase since last quarter. The rate has been stable over the last four quarters. The number of people in unemployment is now 40,400, up by 2,800 since last quarter. The South East unemployment rate is 4.1%, no change since the last quarter. The Coast to Capital region is also performing much better than the United Kingdom where the unemployment rate is 5.1%.

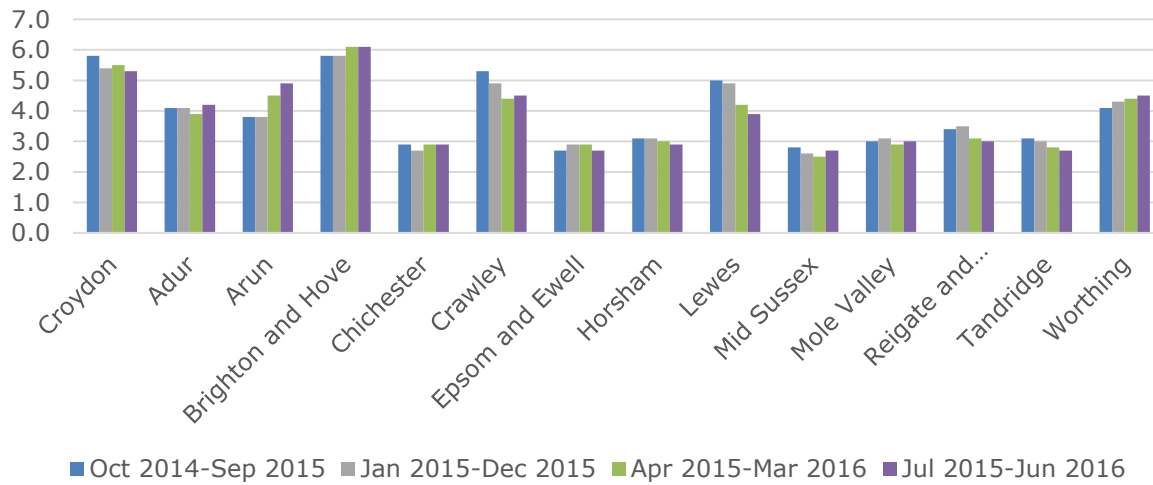


**Figure 3 – Unemployment Rate in the Coast to Capital region – Source: Annual population survey October 2016**

In the Area Partnerships there have generally been decreases across the four quarters, in particular in the Gatwick Diamond and Croydon areas. There have been slight increases in the Coastal West Sussex area and Greater Brighton City region over the last quarter.

At Local Authority level the trends in unemployment rates have been varied. Croydon, Crawley, Lewes, and Tandridge have seen consistent falls in unemployment over the last four quarters, notably in Lewes there has been a 1.1% fall in the unemployment rate over the last year. The Arun and Worthing areas have had consistent increases in unemployment rates over the last four quarters, rising 1.1% and 0.4% respectively. There have also been slight increases in Adur, Mid Sussex, and Mole Valley over the last quarter.

### Unemployment Rates - Local Authorities



**Figure 4 – Unemployment Rate in Local Authorities – Source: Annual population survey model based unemployment July 2016**

October 2016	Employment Rate %	Unemployment Rate %
United Kingdom	73.7	5.1
South East	77.3	4.1
Coast to Capital	79.0	3.8
Croydon	76.9	5.3
Greater Brighton City Region	77.0	4.8
Gatwick Diamond	83.6	3.2
Rural West Sussex	77.9	3.5
Coastal West Sussex	76.7	4.4
West Sussex	79.2	2.9
Croydon	76.9	5.3
Adur	77.9	4.2
Arun	68.8	4.9
Brighton and Hove	73.1	6.1
Chichester	82.8	2.9
Crawley	84.9	4.5
Epsom and Ewell	86.9	2.7
Horsham	81.9	2.9
Lewes	81.7	3.9
Mid Sussex	79.6	2.7
Mole Valley	84.7	3.0
Reigate and Banstead	83.3	3.0
Tandridge	87.4	2.7
Worthing	80.5	4.5

**Table 1 – Employment and Unemployment Rates in the Coast to Capital Region Source: Annual population survey and model based unemployment October 2016**

### **Area Partnerships:**

For data purposes these partnerships have been built up using the Local Authority areas that they cover, a list is below. It should be noted that some of these partnerships overlap and some Local Authority areas are counted in both, for this reason the Area Partnership data will not add up to the Coast to Capital regional data. The Gatwick Diamond, Rural West Sussex, and Coastal West Sussex all have areas that overlap.

It should also be noted that in Rural West Sussex the Arun and Mid Sussex Local Authorities are not classified as rural and that data for Rural West Sussex includes the urban centres within those Local Authorities. Currently there are no regularly updated datasets for locations below Local Authority level, which makes it impossible to provide up to date data for strictly rural areas. This necessitates the use of the broader Local Authority areas to make up Rural West Sussex.

Similarly Chichester is largely rural but is also part of the Coastal West Sussex Partnership and as such those rural areas are included in data for Coastal West Sussex.

Brighton & Hove and Lewes has now been expanded to reflect the Greater Brighton City Region, this involves further overlaps of Local Authority Areas. Mid Sussex is now in Rural West Sussex, the Gatwick Diamond, and the Greater Brighton City Region, and Adur and Worthing are now both in the Coastal West Sussex partnership and the Greater Brighton City Region.

Croydon	The Greater Brighton City Region	The Gatwick Diamond	Rural West Sussex	Coastal West Sussex
<ul style="list-style-type: none"> <li>•Croydon</li> </ul>	<ul style="list-style-type: none"> <li>•Brighton and Hove</li> <li>•Lewes</li> <li>•Adur</li> <li>•Mid Sussex</li> <li>•Worthing</li> </ul>	<ul style="list-style-type: none"> <li>•Crawley</li> <li>•Epsom and Ewell</li> <li>•Horsham</li> <li>•Mid Sussex</li> <li>•Mole Valley</li> <li>•Tanbridge</li> <li>•Reigate and Banstead</li> </ul>	<ul style="list-style-type: none"> <li>•Arun</li> <li>•Chichester</li> <li>•Horsham</li> <li>•Mid Sussex</li> </ul>	<ul style="list-style-type: none"> <li>•Adur</li> <li>•Arun</li> <li>•Chichester</li> <li>•Worthing</li> </ul>