

Coast to Capital Employment Snapshot - April 2015

- Coast to Capital Regional Employment Rate – 76.4%
- Coast to Capital Regional Unemployment Rate – 5.4%

Since the previous quarter the employment rate has fallen slightly in the Coast to Capital region, down 0.1% to 76.4%, and the number of people in employment has fallen by 1,900. The employment rate is still higher than one year ago however. The South East region has had a decline of 0.2% to 75.8% since the last quarter. The Coast to Capital region is 0.6% higher than the South East region and both have risen year on year.

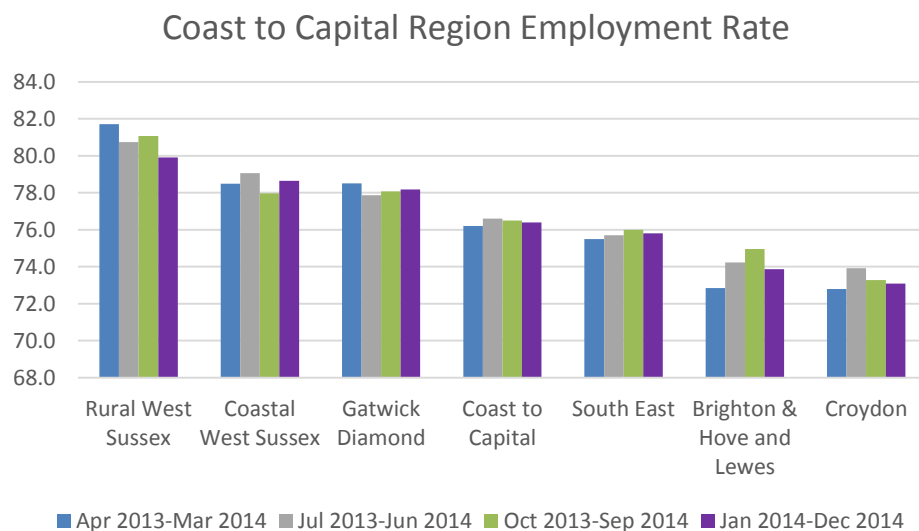


Figure 1 – Employment Rate in the Coast to Capital region - Source: Annual population survey December 2014

Rural West Sussex, Brighton & Hove and Lewes and Croydon have had declines in employment rates quarter on quarter and Rural West Sussex has fallen year on year. In Coastal West Sussex the employment rate has risen by 0.7% and in the Gatwick Diamond it is up by 0.1%.

Local Authority Area Employment Rates

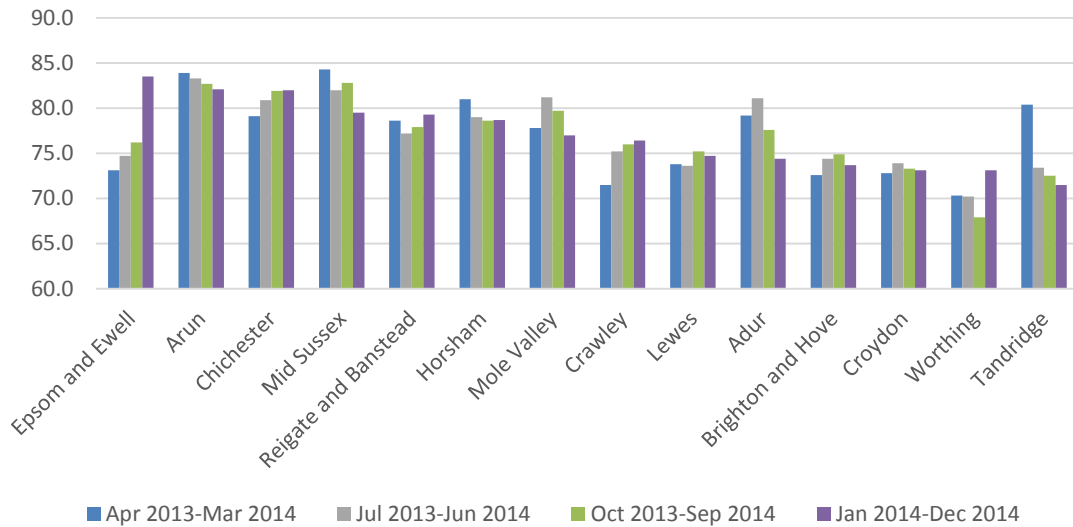


Figure 2 – Employment Rates in Local Authorities – Source: Annual population survey December 2014

Figure 2 shows the employment rate at the Local Authority level and highlights the local variations, particularly where they do not follow the wider trends, such as Crawley, Worthing, and Epsom and Ewell which have seen strong growth both year on year and since last quarter, although in Epsom and Ewell it is most likely an anomaly that will fall back, much like Tandridge in the first quarter. Places like Arun, Tandridge, Mid Sussex, and Horsham have been steadily falling over the last year.

Coast to Capital Region Unemployment Rates

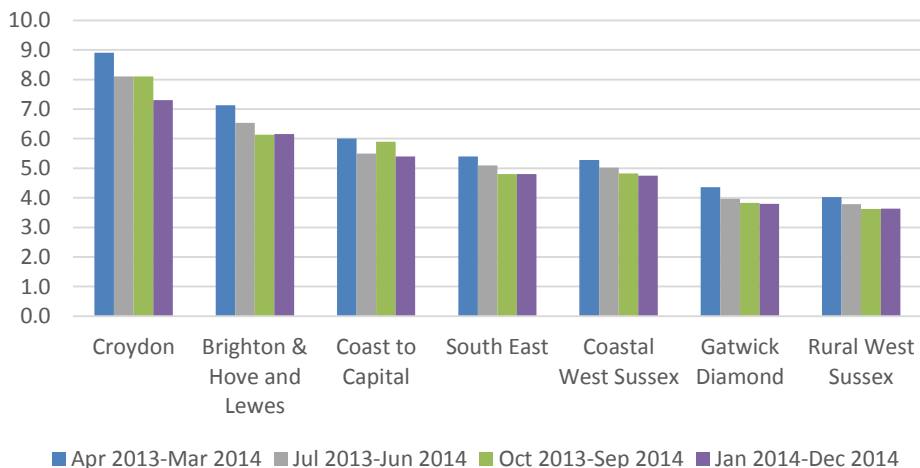


Figure 3 – Unemployment Rate in the Coast to Capital region – Source: Annual population survey December 2014

The Coast to Capital unemployment rate is now 5.4%, down 0.5% since last quarter and 0.6% since last year. The number of people in unemployment is now 56,200, down 5,400 since last quarter. The South East unemployment rate is 4.8%, unchanged since the last quarter but down 0.6% year on year.

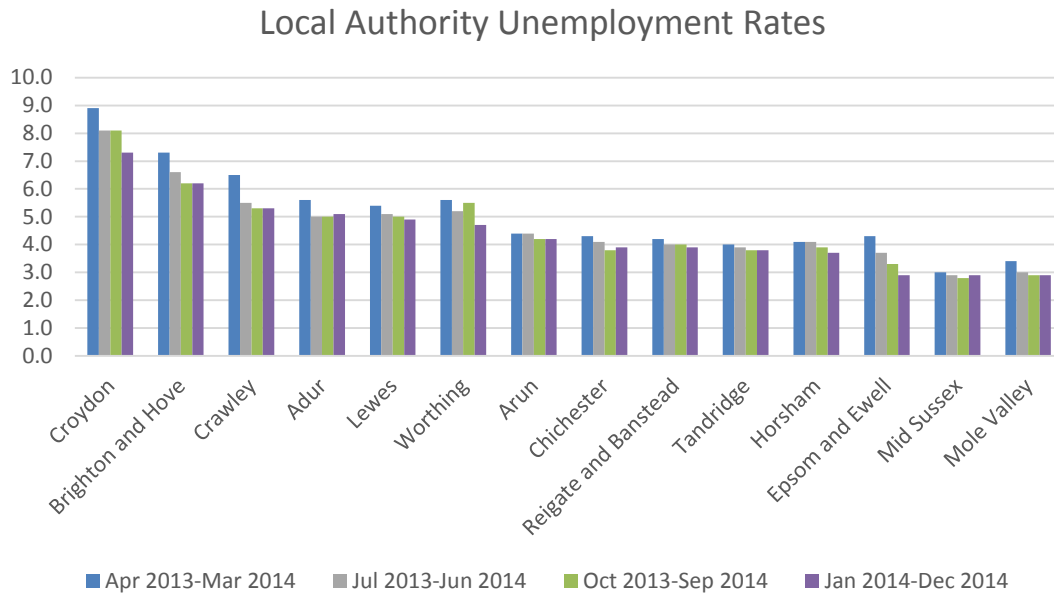


Figure 4 – Unemployment Rate in Local Authorities – Source: Annual population survey December 2014

Unlike the employment rate at Local Authority level the unemployment rate has more consistently followed the wider trends; however the Chichester, Mid Sussex, and Adur areas have each seen a slight 0.1% rise in unemployment. All other areas have been consistently falling or have remained the same since last quarter.

Jan 2014-Dec 2014	Employment Rate	Unemployment Rate
South East	75.8	4.8
Coast to Capital	76.4	5.4
Croydon	73.1	7.3
Brighton & Hove and Lewes	73.9	6.2
Gatwick Diamond	78.2	3.8
Rural West Sussex	79.9	3.6
Coastal West Sussex	78.7	4.8
Croydon	73.1	7.3
Adur	74.4	5.1
Arun	82.1	4.2
Brighton and Hove	73.7	6.2
Chichester	82.0	3.9
Crawley	76.4	5.3
Epsom and Ewell	83.5	2.9
Horsham	78.7	3.7
Lewes	74.7	4.9
Mid Sussex	79.5	2.9
Mole Valley	77.0	2.9
Reigate and Banstead	79.3	3.9
Tandridge	71.5	3.8
Worthing	73.1	4.7

Table 1 – Employment and Unemployment Rates in the Coast to Capital Region January 2014 to December 2014: Source: Annual population survey December 2014